



## (n)Code Solutions- A Division of GNFC Limited Version 1.0

Please download CCA, CA and Sub CA certificate from below link:

<https://www.ncodesolutions.com/repository.asp>

Title **CA Services 2022**

Download Three Chain => **CCA India Certificate 2022**

**(n)Code CA Certificate 2022**

**(n)Code Sub-CA Certificate 2022**

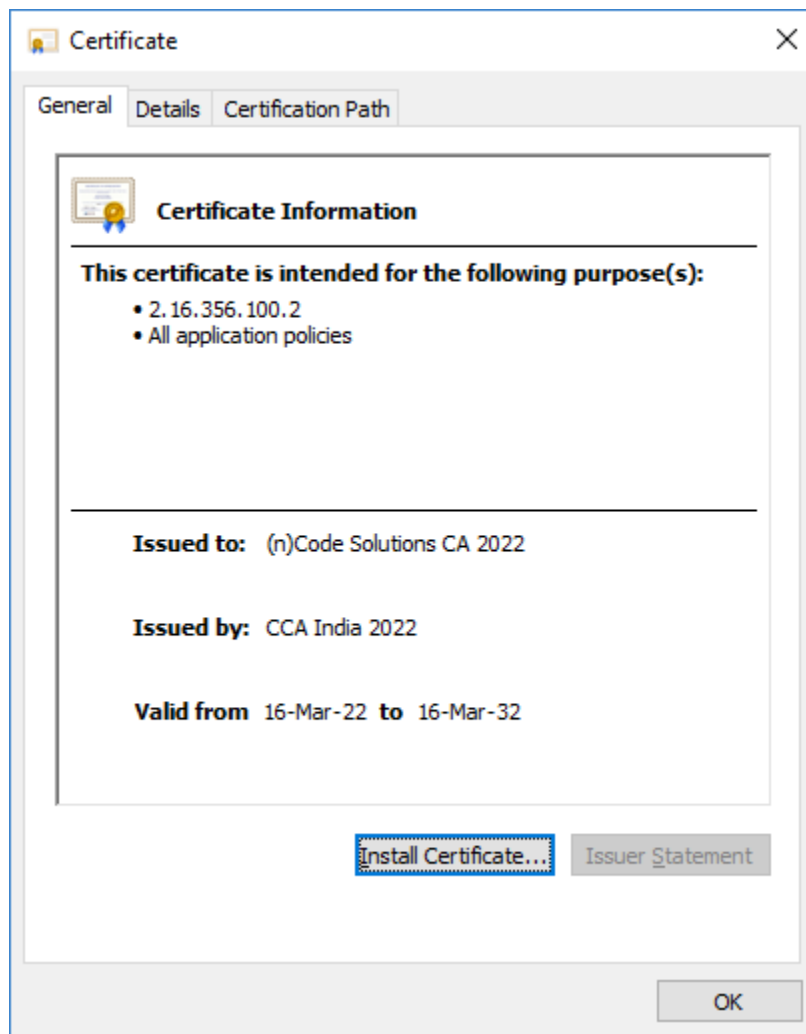
All three chain installation are same process do as instruction.

The screenshot shows the (n)Code Solutions website's repository page. The header includes the company logo, contact information (6356-894-444), and navigation links (HOME, ABBREVIATIONS, SITEMAP). A menu bar contains Home, About Us, Services, Basic FAQs, Support, Contact Us, and Authorized RA. The main content area is titled 'Repository' and lists various documents and files under different service categories: CA Services 2014, CA Services 2022, eSign Services, and SSL with OCSP services. The CA Services 2022 section is highlighted, showing links for CCA India Certificate 2022, CCA India CRL 2022, (n)Code CA Certificate 2022, and (n)Code CA CRL 2022. The footer contains a disclaimer, privacy policy, and social media links.



**Open below pop-up on screen**

Click on => **Install certificate**



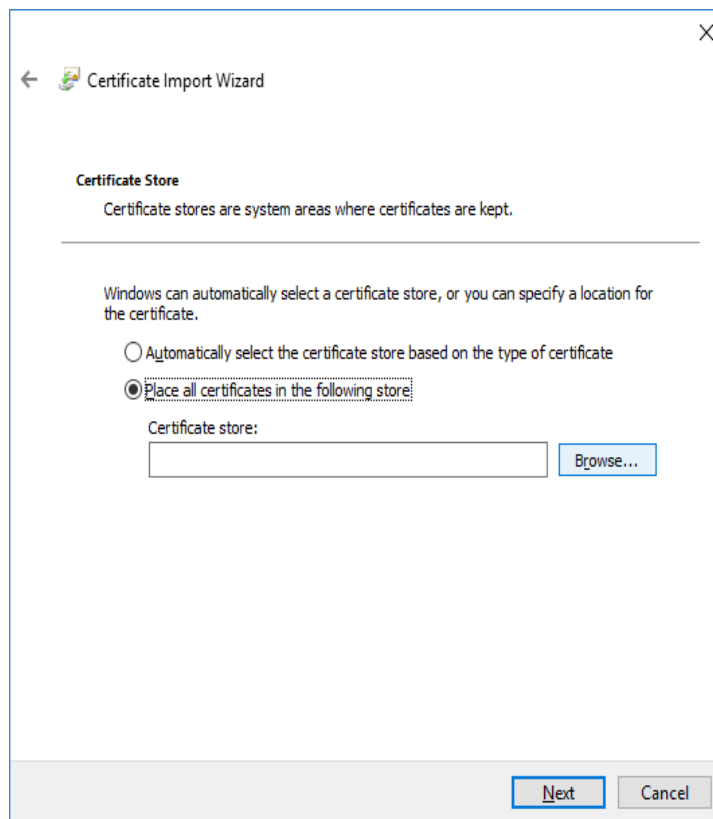
## CA-CCA Certificate Installation



License Certifying Authority

Choose second option, **Place all certificate in the following store.**

Click on => **Browse Button**

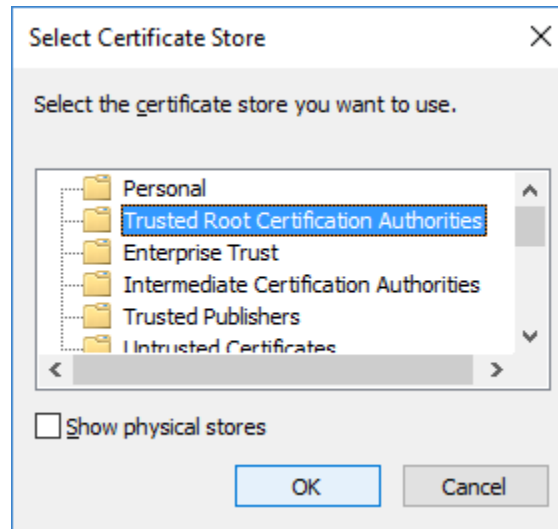


The image shows a screenshot of the 'Certificate Import Wizard' dialog box. The title bar reads 'Certificate Import Wizard'. Below the title bar, there is a section titled 'Certificate Store' with the text 'Certificate stores are system areas where certificates are kept.' Below this, there is a paragraph: 'Windows can automatically select a certificate store, or you can specify a location for the certificate.' There are two radio button options: 'Automatically select the certificate store based on the type of certificate' (which is unselected) and 'Place all certificates in the following store:' (which is selected). Below the selected option, there is a text box labeled 'Certificate store:' and a 'Browse...' button to its right. At the bottom of the dialog, there are 'Next' and 'Cancel' buttons.

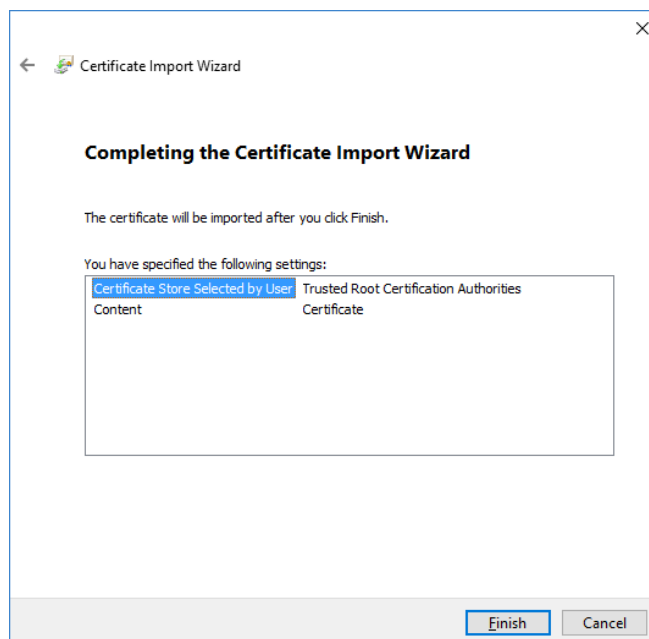


Select, **Trusted Root Certification Authorities**.

Click on => **OK** Button.

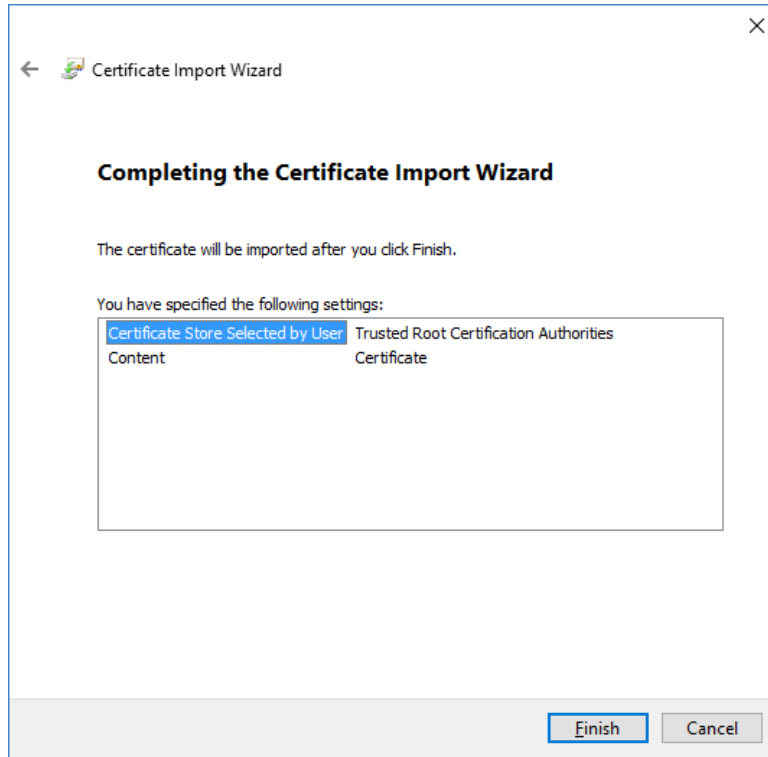


Click on => **Finish** Button.

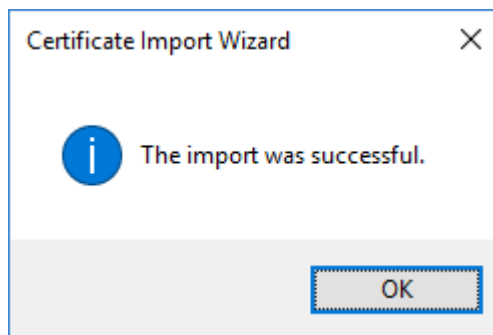




Click on => **Finish** Button.



Pop up message will show (**The Import was successful**).



All three chain installation are same process do as instruction

CA-CCA Certificate Installation



License Certifying Authority

\_\_\_\_\_Thank you\_\_\_\_\_